



**MY
NEW F 45.**

MY NEW ALTENDORF.



ALTENDORF®

WE INVENTED THE SLIDING TABLE SAW. NOW WE ARE REINVENTING IT.

YOUR NEW ALTENDORF.

The world has Wilhelm Altendorf to thank for the sliding table saw. His invaluable invention, which first saw the light of day in 1906, enabled users to make a straight trim cut in a plank – an essential precursor to the 90° crosscut – for the first time. Woodworkers all over the world have been reaping the benefits of this remarkable invention ever since, with more than 150 000 Altendorf machines sold worldwide to date. Unsurprisingly perhaps, the intervening years have also seen the Altendorf name become synonymous with the sliding table saw. The new generation redefines the Altendorf F 45 all over again: new design, the latest technology, new ease of use and unrivalled precision. Enjoy your new Altendorf!





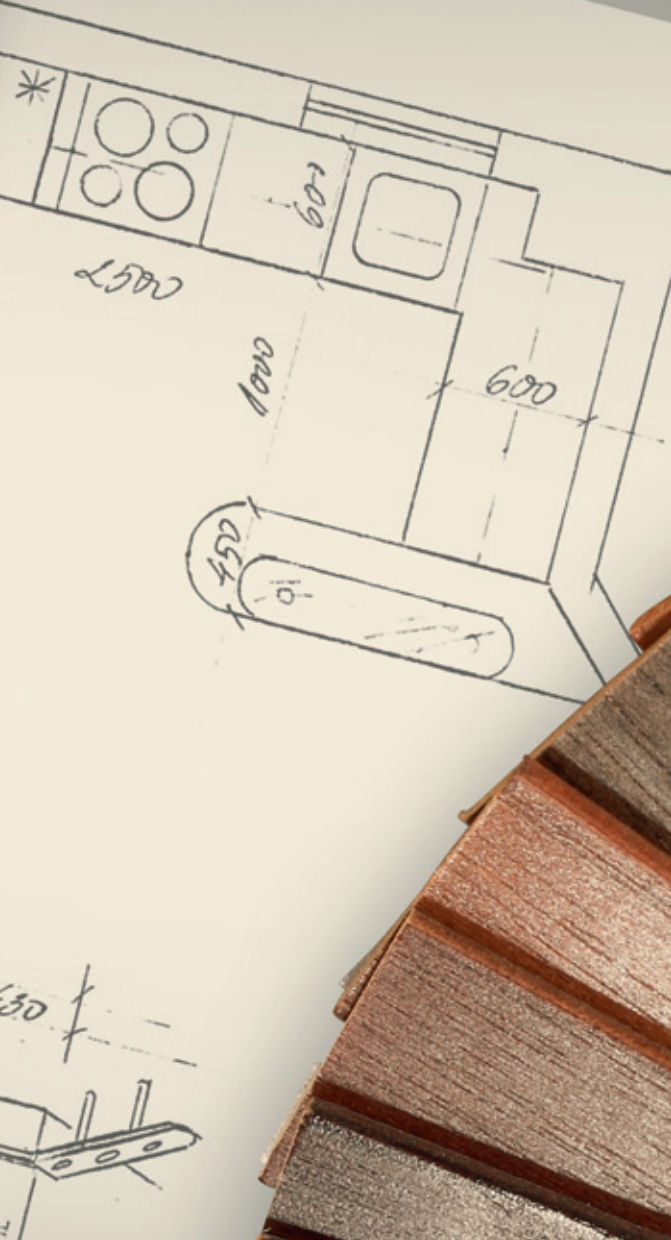
ALTENDORF MINDEN WESTF.



THERE IS STILL ONLY ONE F 45.

YOUR NEW ALTENDORF.

Wave goodbye to compromise: from now on you and only you decide what features your new F 45 will have. Which control unit you work with is entirely up to you, as is the choice of labour-saving features. The most important thing to know is that there are three control units available, every one of which allows you to move up to four axes and tilt the saw unit – to either side. And you can choose exactly the options you need irrespective of the control unit selected. The new F 45 is the first and hitherto only sliding table saw to offer you these options. Only one decision have we taken out of your hands completely: whichever control unit you pick for your new F 45, it will be mounted at eye level. This configuration makes the operator's life much simpler, because the swivel-mounted display is always visible from any working position – even from the right-hand side of the saw blade. Fit out your new F 45 to your precise requirements: it really is time to wave goodbye to compromise.



YOUR NEW F45.

0405



CHOOSE YOUR CONTROL UNIT



OR



OR



F45 ProDrive

F45 EvoDrive

F45 ElmoDrive

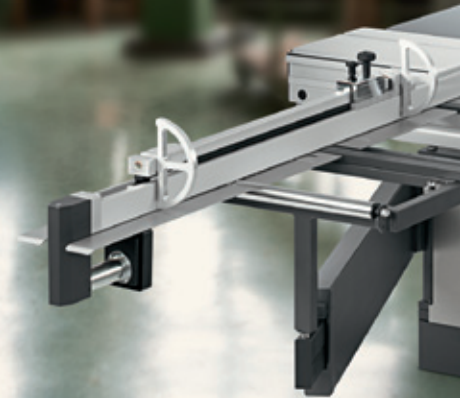
CHOOSE YOUR OPTIONAL EXTRAS



PREPARE YOURSELF FOR AN IMPORTANT DECISION.

PREPARE YOURSELF FOR YOUR NEW ALTENDORF.

The new F45 is a masterpiece of technology and design. The comprehensively redesigned machine frame combines absolutely unprecedented torsion resistance with extremely low levels of vibration, while the smooth front and clear foot space on the floor enable you to operate closer to the machine and the workpiece. The famously smooth-running sliding table, which has received a number of design tweaks, remains the undisputed benchmark for precision cutting and minimal maintenance. Complementing these winning features is the eye-level control unit, with which you determine the height and tilt of the saw blade plus, depending on your choice of controls, sawblade speed and other functions. The crisp new industrial design underlines the distinctive quality of the Altendorf brand, a mix of unique design and timeless aesthetics. The only decision left for you to make is this: which control unit shall it be?





Your new Altendorf packs a solid line-up of standard features.

BASIC SPECIFICATION

- ▶ Motorised rise/fall and tilt adjustment (0–46°) for main saw blade with automatic cutting height correction when saw blade tilted
 - ▶ Eye-level control unit, swivelling
 - ▶ Sliding table, table length 3 000 mm
 - ▶ Rip fence, manual adjustment using graduated scale, includes fine adjustment, cutting width 1 000 mm
 - ▶ Crosscut fence with fixed 90° angle, manual adjustment using graduated scale up to 3 200 mm
 - ▶ Maximum saw blade projection 150 mm, maximum saw blade diameter 450 mm
 - ▶ Motor rating 4 kW (5.5 HP), single speed (4 000 rpm)
 - ▶ AKE tool clamping system for the main saw blade
-

Now decide which control unit best suits your Altendorf.



F 45 ProDrive: CONTROL UP TO FOUR AXES AND MORE RIGHT FROM THE START.

YOUR NEW ALTENDORF.

The F 45 ProDrive provides you with all operator controls at eye level for optimal ease of use. Functions such as control of up to four axes – specifically the height and tilt (up to 46° to either side)* of the saw unit and the motorised rip fence* and crosscut fence* – are already included. The F 45 ProDrive also automatically corrects the positioning of the rip fence* when the saw unit is tilted. You also have control of the vacuum clamping system* in the sliding table, which allows you to securely retain large workpieces. Finally, anyone who frequently has to repeat the same cutting operation will quickly learn to love the F 45 ProDrive's 99-programme set-up memory.

**with corresponding optional equipment*



30.0	0.0°
1700.0	600.0
4000	19.0
3.2	

Navigation keypad with buttons: +/-, CE, V, 7, 8, 9, 4, 5, 6, 1, 2, 3, 0, ., and a return key.



ALTENDORF®

Physical controls including two rotary switches (labeled 'KARTE' and 'DIP'), a red emergency stop button, and a 2x2 grid of function buttons: minus, plus, Stop (yellow), and Stop (black).

F 45 EvoDrive: EFFICIENCY-BOOSTING FEATURES ALREADY ONBOARD.

YOUR NEW ALTENDORF.

The new F 45 EvoDrive has a 7" touch screen with keyboard for entering numerical dimension specifications. It can control up to four axes, including saw blade tilt (up to 46°) to either side*. What distinguishes it from the F 45 ProDrive is its pre-installed application technology: the F 45 EvoDrive defines inside and outside dimensions automatically from the material thickness data supplied, for example. It also brings you the pleasure of additional grooving, incremental dimension and bevel rip features, which should simplify your work considerably. As, indeed, should the compound mitre function and the tool management system. The F 45 EvoDrive lets you store 999 programmes for rapid retrieval via the keyboard too: try the F 45 EvoDrive and discover how we have already done much of the hard work for you!

**with corresponding optional equipment*



The digital display shows the following settings:

- 415.0 (with a hand icon)
- 2110.0 (with a hand icon)
- 22.50° (with a hand icon and a saw icon)
- 40.0 (with a person icon)
- 30.0° (with a person icon)
- 560.0 (with a person icon)

Below the settings is a 3D model of the machine with a label "Extras" pointing to a specific component. At the bottom of the display area is a row of function buttons: "4200 RPM", "Menu", a T-shaped icon, "Back", "Prog", and a wrench icon.

The physical control panel features two digital dials, each with a scale from 0 to 10000. The left dial is set to 10000 and the right dial is set to 0. To the right of the dials is a prominent red emergency stop button. Further right are four function buttons: a minus sign (-), a plus sign (+), a yellow "Start" button with a left-pointing arrow, and a "Stop" button with a downward-pointing arrow.

F 45 ElmoDrive: CONTROL TECHNOLOGY WITHOUT EQUAL.

YOUR NEW ALTENDORF.

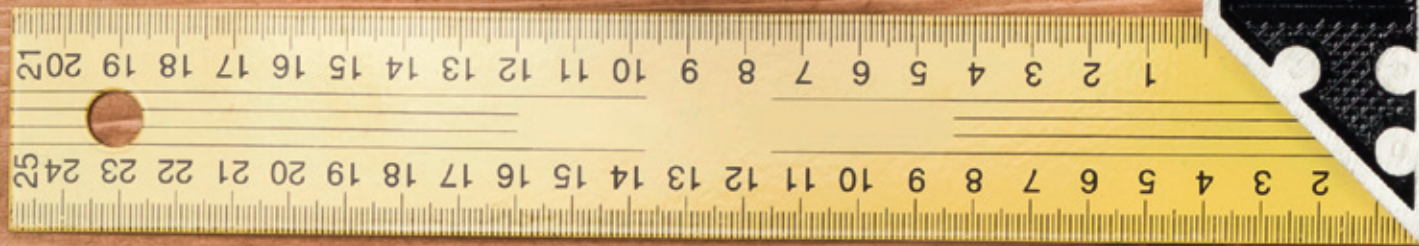
The F 45 ElmoDrive incorporates the most advanced and comprehensive control technology in existence for sliding table saws. Positioned at eye level, it combines optimal ease of use and presentation with practical and ergonomic operation. The calculator, geometric shapes, compound mitre and tool management functions are easily accessed and clearly presented on the 12" touch screen. The F 45 ElmoDrive gives you motorised control of all axes, of course, and the ability to tilt the saw unit by up to 46° to either side.* The lower part of the display can be used to store functions you return to regularly (desktop function) for even more efficient operation. The F 45 ElmoDrive is the only control unit that can be linked with a cut optimisation package. All in all, nothing comes close to the F 45 ElmoDrive for control technology. Day after day.

**with corresponding optional equipment*



**GOOD ADVICE NEED NOT
COST YOU THE EARTH.**

YOUR F45 OPTION PACKAGES.





We have always offered an almost limitless range of feature options to help you make an Altendorf your very own, but the addition of the three new control units vastly increases the choices available to you. Every single option in the Altendorf range is compatible with each of the three control units. Such a wealth of choice delivers real benefits for our customers, not least because of the enormous versatility it provides. But on the other hand it might leave you spoiled for choice! So for this reason we have brought together the four most commonly ordered option combinations in a set of handy predefined packages. This allows you to profit from the preferences of your woodworking colleagues worldwide – although you are of course still more than welcome to modify your preferred package as necessary to meet your own specific requirements.

A man with glasses and a mustache, wearing a dark jacket, is leaning over a large sheet of light-colored material on a workbench. He is looking intently at the material. In the background, there is a circular saw blade and other workshop equipment. The scene is set in a well-lit workshop.

FLEXIBILITY IS THE KEY.

YOUR F45 PACK 1.



You have a choice of three control units.
See pages 8–13 for details.



Crosscut-mitre fence



DIGIT X rip fence



Infeed support roller



Toolbox

FLEXIBILITY IS THE KEY.

YOUR F45 PACK 1.

This F45 includes additional ease-of-use features on top of the standard system. All F45 control units are installed at eye level, so you can easily see all of the data displayed while sawing. The **crosscut-mitre fence** with integral length compensation provides convenience and flexibility, enabling you to cut angles and mitres precisely with one function. Length compensation is effected as part of the same work step. The **digital display (DIGIT X)** ensures fast and precise setting of the rip fence. The corrected measurement for the end stop is displayed digitally on the control unit screen for safety when working with the saw blade tilted. The **infeed support roller** on the right-hand side is ideal when handling longer workpieces. The practical **toolbox** is a closable container capable of holding up to six tool carriers (maximum saw blade diameter 550mm) ready for use.



OPTION PACK 1

Crosscut-mitre fence (WGA) with length compensation, stops to 3500 mm

Rip fence, manual adjustment with digital display (DIGIT X), cutting width 1 000 mm

Toolbox, maximum of six tools up to 550 mm including riving knife

Infeed support roller, stows under sliding table when not deployed

BASIC SPECIFICATION

Motorised rise/fall and tilt adjustment (0–46°) for main saw blade with automatic cutting height correction when saw blade tilted

Eye-level control unit, swivelling

Sliding table, table length 3 000 mm

Rip fence, manual adjustment using graduated scale, includes fine adjustment, cutting width 1 000 mm*

Crosscut fence with fixed 90° angle, manual adjustment using graduated scale up to 3 200 mm*

Maximum saw blade projection 150 mm, maximum saw blade diameter 450 mm

Motor rating 4 kW (5.5 HP) with one speed (4 000 rpm)

AKE tool clamping system for the main saw blade

* replaced by pack specification

A man in a grey polo shirt is working in a factory. He is wearing clear safety glasses and yellow earplugs. He is looking intently at a computer monitor. In the background, there is a robotic arm and a yellow and black striped safety barrier. The scene is brightly lit, suggesting an industrial environment.

**ENHANCED PRECISION
AND ERGONOMICS.**

YOUR F45 PACK 2.



You have a choice of three control units.
See pages 8–13 for details.



Motor rating 5.5 kW
(7.5HP), three speeds



Crosscut-mitre fence
with DIGIT L



CNC rip fence

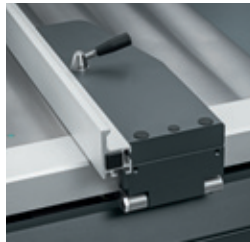


Clipboard

ENHANCED PRECISION AND ERGONOMICS.

YOUR F 45 PACK 2.

Greater customer expectations demand a more richly featured machine for even higher quality processing. This option package is all about enhanced precision and ergonomics. The powerful **5.5kW (7.5HP) motor** offers a choice of three speeds (3000/4000/5000 rpm). Selecting the required speed is a quick manual task. The **crosscut-mitre fence with digital display (DIGIT L)** and integral length compensation allows the length dimension to be set with 1/10mm accuracy, which is easily achieved thanks to the fine adjustment feature, while the **CNC rip fence** ensures precision on the opposite side of the saw blade. The positioning of the rip fence is corrected automatically when the saw unit is tilted. The practical **clipboard** on the control unit display allows you to keep an eye on your working documents as you cut.



OPTION PACK 2

Motor rating 5.5kW (7.5HP), three speeds (3000/4000/5000rpm), manual adjustment

Crosscut-mitre fence (WGA) with length compensation and DIGIT L

CNC rip fence, cutting width 1000mm

Clipboard

BASIC SPECIFICATION

Motorised rise/fall and tilt adjustment (0–46°) for main saw blade with automatic cutting height correction when saw blade tilted

Eye-level control unit, swivelling

Sliding table, table length 3000mm

Rip fence, manual adjustment using graduated scale, includes fine adjustment, cutting width 1000mm*

Crosscut fence with fixed 90° angle, manual adjustment using graduated scale up to 3200mm*

Maximum saw blade projection 150mm, maximum saw blade diameter 450mm

Motor rating 4kW (5.5HP), single speed (4000rpm)*

AKE tool clamping system for the main saw blade

* replaced by pack specification

A close-up photograph of a man with short dark hair and glasses, wearing a white shirt and a black vest. He is focused on a task, looking down at a machine he is operating. The background is blurred, suggesting an industrial or workshop setting. The lighting is soft and focused on the man's face and hands.

**SAVE TIME THROUGH
EASE OF OPERATION.**

YOUR F45 PACK 3.



You have a choice of three control units.
See pages 8–13 for details.



**VARIO drive with 5.5 kW
(7.5 HP) drive rating**



**Parallelogram cross slide
(PQS)**



CNC rip fence

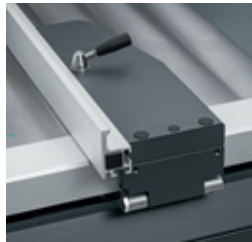


Clipboard

SAVE TIME THROUGH EASE OF OPERATION.

YOUR F45 PACK 3.

Time is money – and never more so than today. We assembled our third suggested package of features with this realisation in mind to produce an F45 that really respects the value of time. The **clipboard** mounted at eye level on the control unit is convenience itself, enabling you always to keep your job documents in easy reach. The **VARIO drive with infinitely variable speed control** (2 000–6 000 rpm) allows you to match speed perfectly to your material with the barest minimum of set-up time and as an added bonus the service life of your sawblades between sharpenings is increased considerably. The **parallelogram cross slide (PQS)** makes it easier to manage large workpieces and ensures maximum precision for all angle cuts. Absolute repeatability avoids miscuts. On the right-hand side of the saw blade, the **CNC rip fence** assumes the specified position within seconds of you entering the figures on the control unit display. This can generate overall time savings of 25% every day, a gain you can undoubtedly put to good use.



OPTION PACK 3

VARIO drive with 5.5 kW (7.5 HP) drive rating, infinitely variable speed adjustment (2 000–6 000 rpm)

Parallelogram cross slide (PQS) with digital angle display, stops to 3 500 mm

CNC rip fence, cutting width 1 000 mm

Clipboard

BASIC SPECIFICATION

Motorised rise/fall and tilt adjustment (0–46°) for main saw blade with automatic cutting height correction when saw blade tilted

Eye-level control unit, swivelling

Sliding table, table length 3 000 mm

Rip fence, manual adjustment using graduated scale, includes fine adjustment, cutting width 1 000 mm*

Crosscut fence with fixed 90° angle, manual adjustment using graduated scale up to 3 200 mm*

Maximum saw blade projection 150 mm, maximum saw blade diameter 450 mm

Motor rating 4 kW (5.5 HP), single speed (4 000 rpm)*

AKE tool clamping system for the main saw blade

* replaced by pack specification

A man with short brown hair and blue eyes, wearing a dark grey zip-up jacket, is leaning over a workbench in a factory. He is looking intently at a large, blurred metal wheel in the foreground. The background shows a factory floor with various equipment and a window looking out onto a brick building.

MAKE WORK A PLEASURE.

YOUR F45 PACK 4.



You have a choice of three control units.
See pages 8–13 for details.



**VARIO drive with 5.5 kW
(7.5 HP) drive rating**



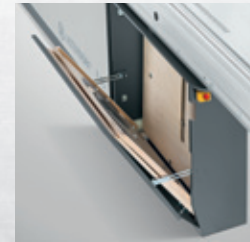
**CNC crosscut fence
DUO 90**



CNC rip fence



Clipboard

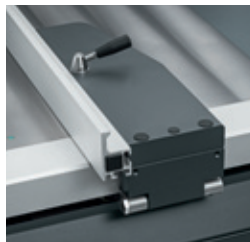
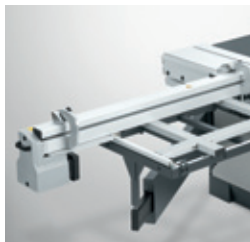


Toolbox

MAKE WORK A PLEASURE.

YOUR F45 PACK 4.

Altendorf's design engineers have been developing and refining the sliding table saw incessantly ever since Wilhelm Altendorf designed the first one in 1906. This F45 package contains the highest standard of convenience, precision and safety features a modern sliding table saw can offer. Choose the F45 ElmoDrive to extract the very best from this package and enjoy straightforward control of the saw unit height and tilt settings via the 12" touch screen. Match speed perfectly to your material and slash your set-up time with the infinitely variable speed control of the **VARIO drive** (2 000–6 000 rpm). Position the **CNC rip fence** and the stops on the **CNC crosscut fence DUO 90** too. The **clipboard** keeps your job documents in view, the practical **toolbox** holds up to six tools ready to use. Treat yourself to Altendorf's convenience and positioning technology features for the ultimate in ease of use!



OPTION PACK 4

VARIO drive with 5.5 kW (7.5 HP) drive rating, infinitely variable speed adjustment (2 000–6 000 rpm)

CNC crosscut fence DUO 90

CNC rip fence, cutting width 1 000 mm

Toolbox

Clipboard

BASIC SPECIFICATION

Motorised rise/fall and tilt adjustment (0–46°) for main saw blade with automatic cutting height correction when saw blade tilted

Eye-level control unit, swivelling

Sliding table, table length 3 000 mm

Rip fence, manual adjustment using graduated scale, includes fine adjustment, cutting width 1 000 mm*

Crosscut fence with fixed 90° angle, manual adjustment using graduated scale up to 3 200 mm*

Maximum saw blade projection 150 mm, maximum saw blade diameter 450 mm

Motor rating 4 kW (5.5 HP), single speed (4 000 rpm)*

AKE tool clamping system for the main saw blade

* replaced by pack specification

**NEED EVEN MORE?
NO PROBLEM.
HELP YOURSELF!**

OPTIONS FOR YOUR F45.

The “**Options, Features, Prices**” brochure details all the options available to make your F45 even easier to use and your jobs more straightforward to complete. Many of our Altendorf optional extras not only simplify operation, but also deliver not inconsiderable time savings of up to 25%. These and other benefits are described in full in the brochure, which also shows you clearly how much each feature costs. **That should be all the information you need.**



**ALTENDORF ONLINE:
EQUALLY GOOD WITH PC,
TABLET OR SMART PHONE.**

YOUR CONSTANT LINK TO YOUR F45.

The **current Altendorf website** works equally well accessed from a PC, a tablet or a smart phone: images and text are automatically adapted to suit your device, so you can find out more about the F45 and, of course, the rest of what Altendorf has to offer – training, warranties, maintenance and other services – wherever you happen to be. **Keep in touch!**



THE SAW SCHOOL: FOR THE PROFESSIONAL – AND USERS WHO WANT TO BECOME ONE.

ACHIEVE BETTER RESULTS WITH YOUR F45.

The **Altendorf Training Centre** attracts up to 2000 users and experts from the trade every year to keep abreast of the latest technical developments. Altendorf's training programme covers both the technology and the application of our machines. We take great pleasure in helping customers achieve more with their F45, but we would recommend you act fast to secure your training place: www.altendorf.com/schoolofsaw



All machines illustrated are CE models.
Some machine images show features that are not included in the basic specification.
Right of technical modification reserved.
© ALTENDORF® 2015
Order number K9690.0602. 04/2015



**FOR FRIENDS OF ALTENDORF:
THE “ALTENDORF
INFORMATION FORUM“.**

THE HOME OF YOUR SAW.



The Altendorf sliding table saw has led the way ever since Wilhelm Altendorf developed and built the very first saw of the type in 1906. His invention has since gone on to conquer the world, attracting over 150 000 grateful devotees. The company marked its centenary by opening the Altendorf Training Centre, which exhibits a few of the very earliest sliding table saws as well as, more practically, the current models. Thousands of friends of the Altendorf brand come together here every year to attend demonstrations and training events: our technical development never stops, so there is always something new to discover. If you think you might be in the area some time or would like to give your employees the chance to refresh their knowledge, a warm welcome awaits you at the Saw School!

Wilhelm Altendorf GmbH & Co. KG Maschinenbau · Wettinerallee 43/45 · 32429 Minden · Germany
Phone +49 571 9550-0 · Fax +49 571 9550-111 · info@altendorf.de · www.altendorf.com